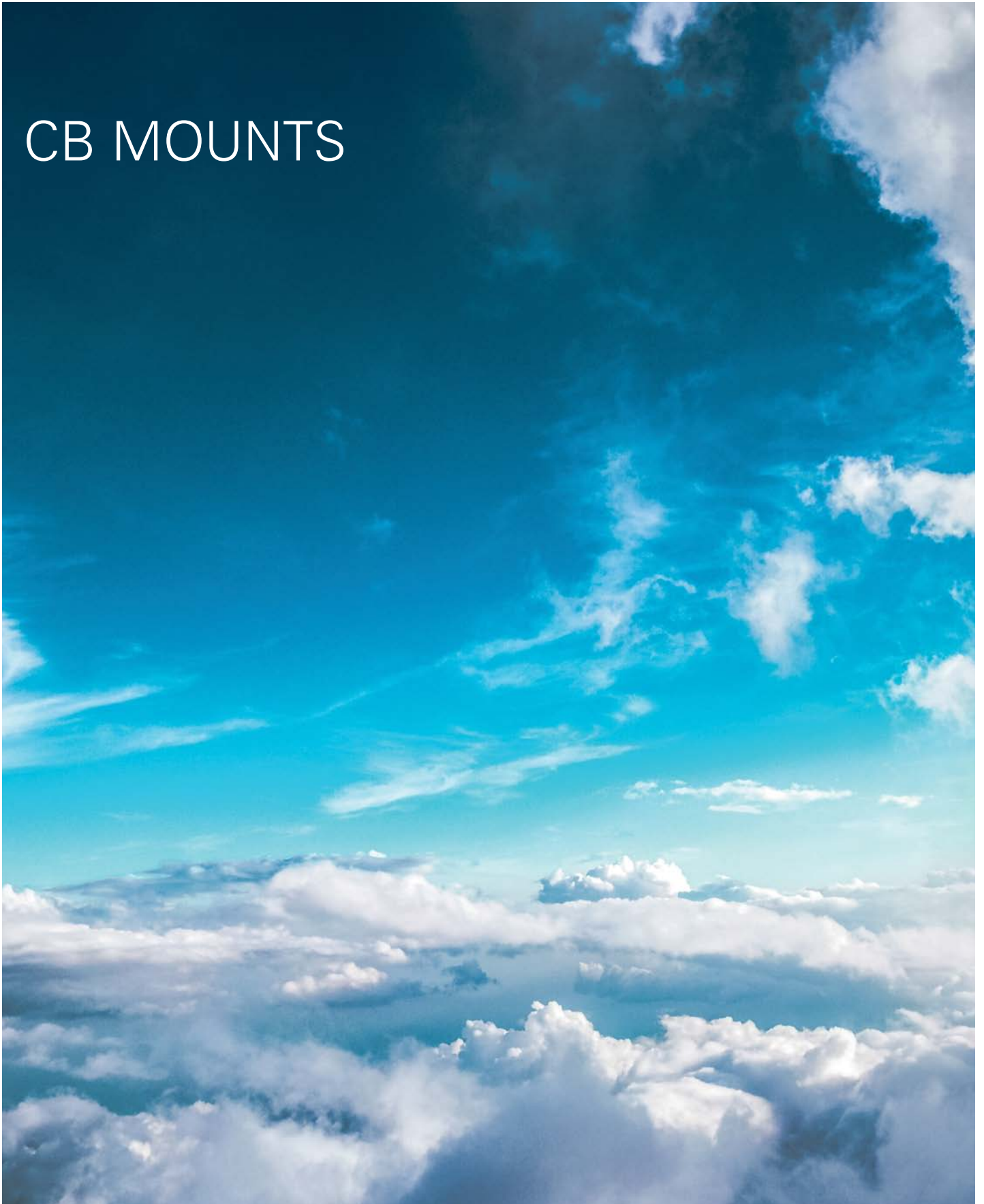


OFF HIGHWAY

CB MOUNTS



CB Mounts

DESCRIPTION

The type CB mounts are installed pairs. Installation is simplified as both mounts fixed with through bolt and a washers at each end.

The mount is provided with a built in wear plate that prevents elastomeric element from coming in contact with sharp edges support frames or structures that may cause friction in traditionally used semi bonded mounts. Therefore with these mounts there is no need to machine radii or chamfer holes.

The specific design of the mounts permits high dynamic loads whilst limiting the movement due to the multiple axial snubbing design.



Technical Characteristics

- The Type CB is radially 30% softer than axially. This feature is specially interesting for those machines or equipments where radial axis vibration isolation important.
- The mount is provided with a built in snubbing system that allows the following elastical courses:

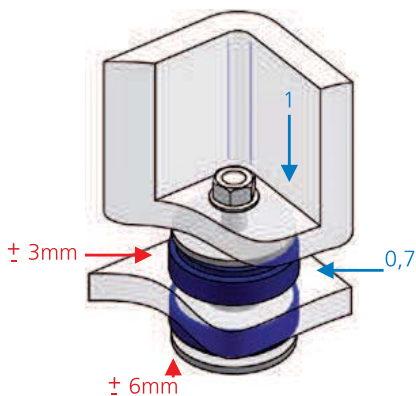
Vertical: +/- 6 mm
Horizontal: +/- 3mm

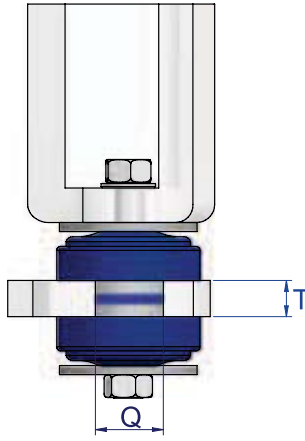
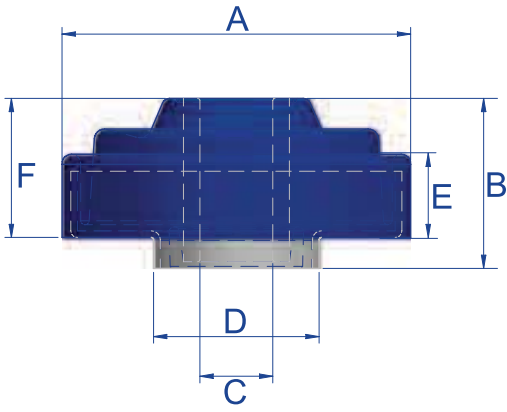
Applications

- Agricultural or construction equipment cabins, engines, radiators, transmission, battery boxes.
- Marine equipment
- Mobile Generators or compressors.
- Chassis frames for Military, Bus, Truck, Motorhome and
- Emergency vehicles.



Blue colour: Stiffness ratios per axe.
Red colour: Maximum elastical course per axe.





Type	A (mm)	B (mm)	C (mm)	D (mm)	E (mm)	F (mm)	Q (mm)	T (Max.)	T (Min.)	Weight (gr.)	Washer	Code	Shore	Max. Load (kg)
CB 60	66	34,5	16,5	39,5	16	28	40	20	20	140	606130	156011	45 Sh	70
												156013	55 Sh	120
												156014	65 Sh	170
CB 65	65,5	38	18,9	40,5	19	29	41	20	20	175	706004	156031	45 Sh	70
												156032	55 Sh	120
												156033	65 Sh	170
CB 80	78,5	37	16,5	37,5	18	32,5	38	20	18	242	608074	156001	45 Sh	90
												156002	55 Sh	140
												156003	65 Sh	200
CB 110	109	47	22,5	56,5	27,5	40	57	25	25	630	610192	156021	45 Sh	235
												156022	55 Sh	375
												156023	65 Sh	550

Type	Weight (gr.)	Øext (mm)	Øint (mm)	THICKNESS (mm)	Code
CB 60 WASHER	125	66	16,5	5	606130
CB 65 WASHER	141	67	18,5	5	706004
CB 80 WASHER	175	76	16,5	5	608074
B 110 WASHER	286	110	23	5	610192

Natural Frequency Cabine Mount

Load Deflection Graph Type Cabine Mount

