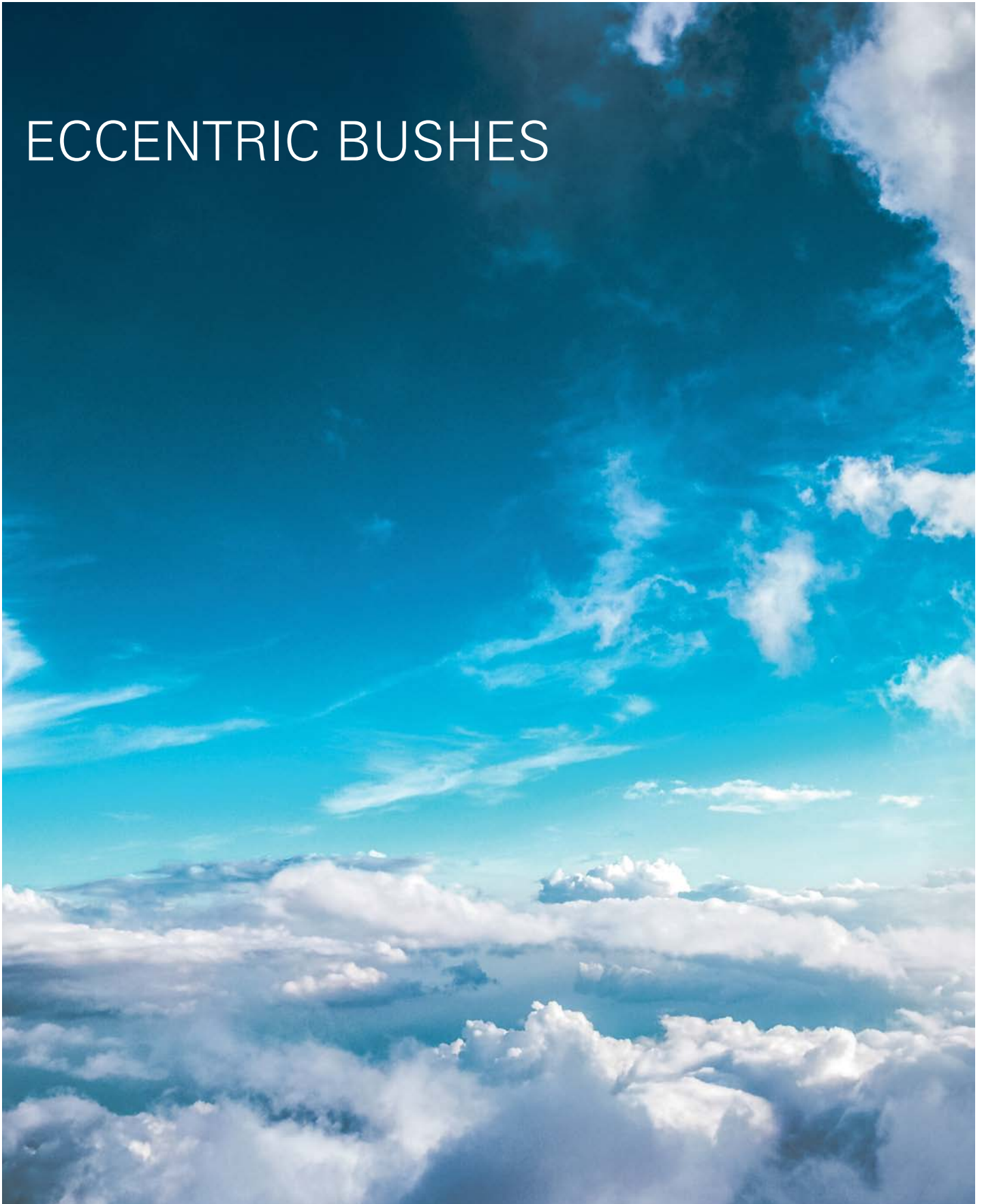


OFF HIGHWAY

ECCENTRIC BUSHES



Eccentric Bushings

DESCRIPTION

On the eccentric bushings the center points of the inner and outer cylinders are not the same. As a result it is more flexible in the direction of the main load and it keeps the same control in the other direction.

The eccentric bushing is available in two hardnesses, 45 and 60 sh.

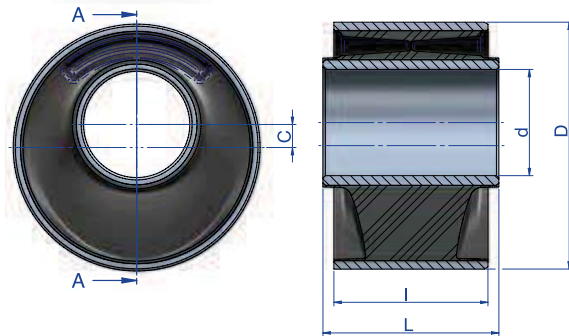
Technical Characteristics

- Optimal vibration damping and isolation.
- Fit to use for robust and safe constructions.
- Simple installation and application.

Applications

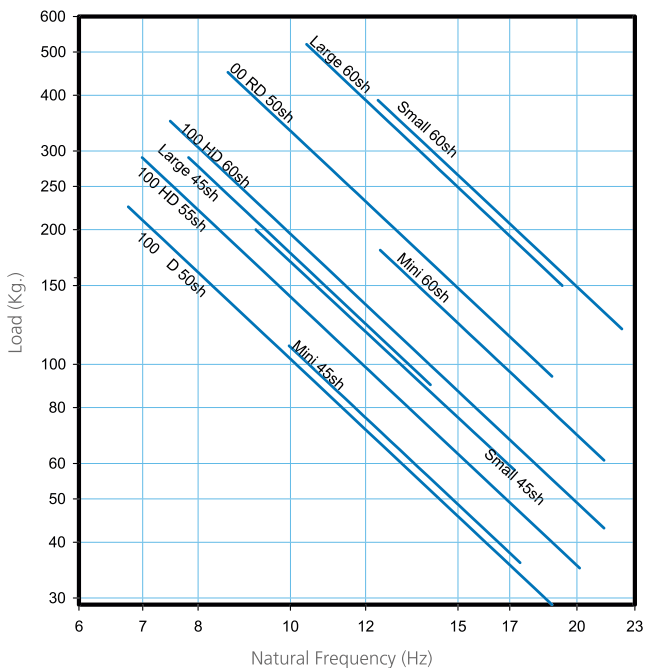
The Eccentric Bushing is best suited to the following situations and applications:

- Tilting cab suspension.
- Suspension arms.

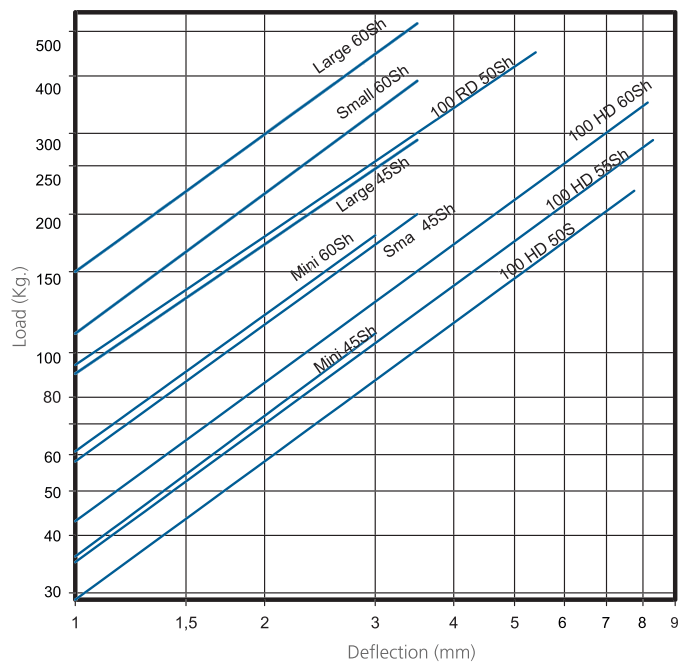


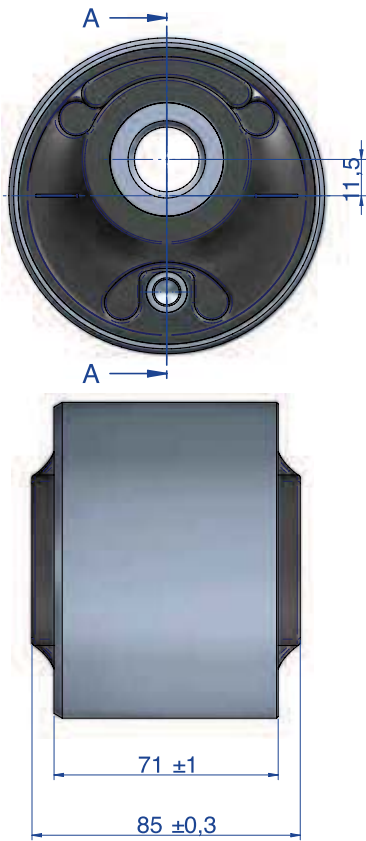
Type	d (mm)	C (mm)	D (mm)	l (mm)	L (mm)	Weight (gr.)	Code	Shore	Max. Load (kg)
MINI	16,2	6,1	48	50,5	64	311	154161	45 Sh	110
							154163	60 Sh	180
SMALL	24	10,5	75,3	50,8	68	554	154159	45 Sh	200
							154158	60 Sh	390
LARGE	43,7	9,5	101,6	63,4	72,4	1096	154154	45 Sh	290
							154155	60 Sh	510
100 HD	-	-	-	-	-	1046	154181	50 Sh	290
							154182	55 Sh	350
							154183	60 Sh	430
							154184	70 Sh	565
100 RD	-	-	-	-	-	1558	154175	50 Sh	450

Natural Frequency Cabine Mount

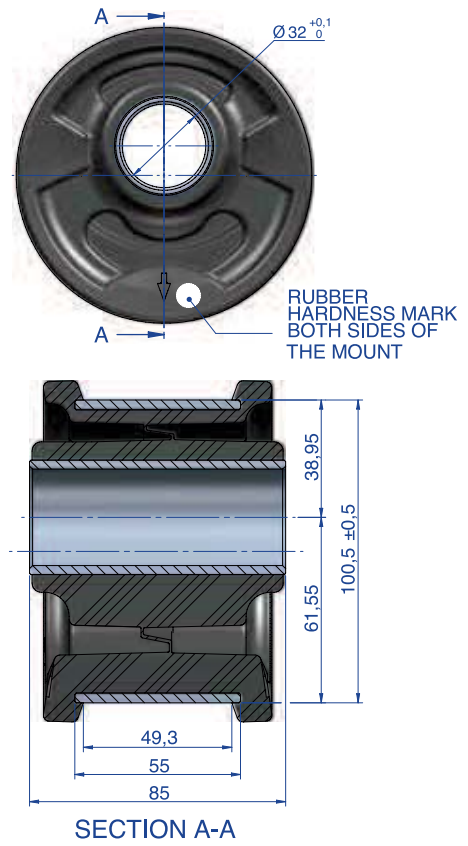


Load Deflection Graph Type Cabine Mount





100 RD



100 HD

