

INDUSTRIAL

MD MOUNTS



MD Mounts

DESCRIPTION

MD-type mounts have similar architecture to the BSB and BRB.

The advantage of this mount is that it is a high-damping elastic compound.

Its special mix affords it a high degree of antivibration isolation and offers great stability to suspended equipment.

Technical Characteristics

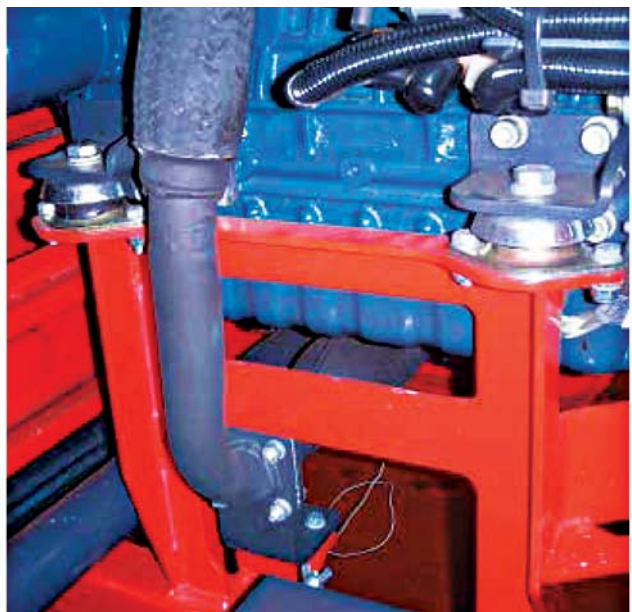
- Metal hood that protects the part from possible oil splashes.
- It has an electrolytic coating that protects the part from corrosion.
- They have an interlocking metal component that provides a fail-safe protection for mobile applications. This device limits the ascending vertical movement when the mounting is submitted to shocks at traction.

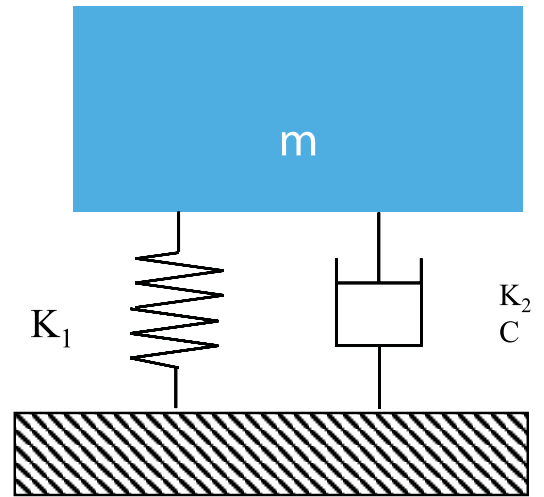
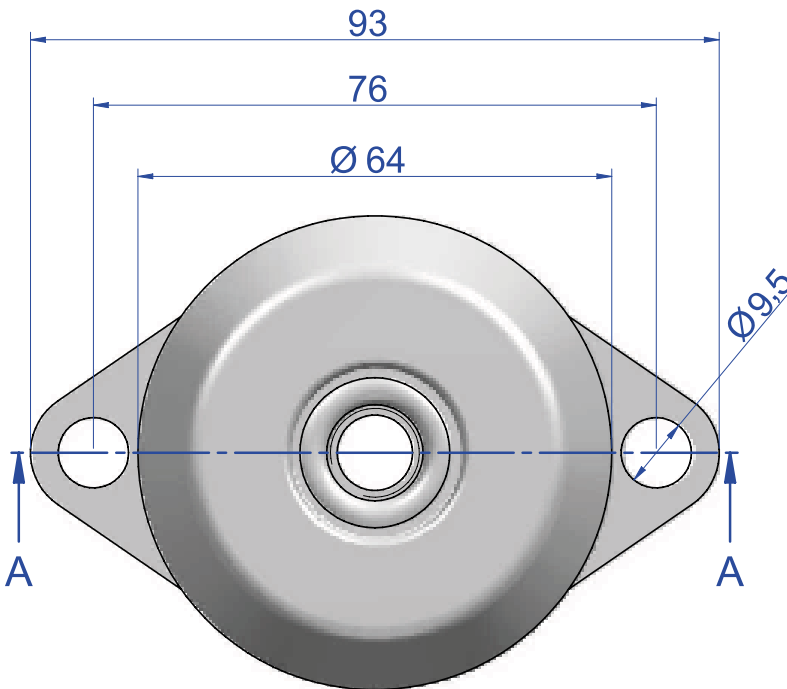
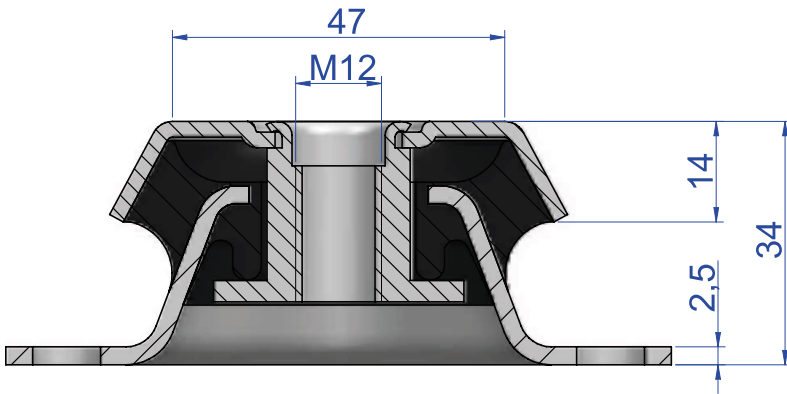
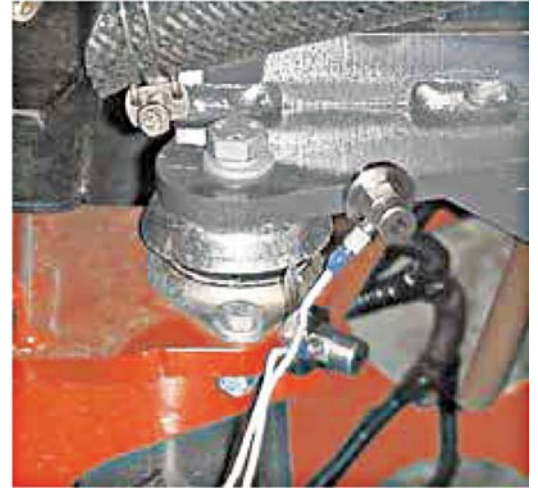
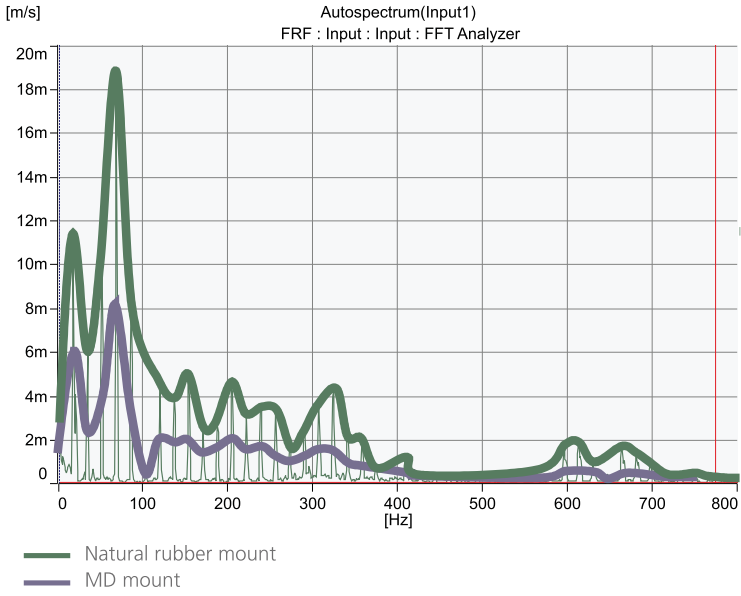
Applications

- This mount has been specially designed to insulate engines that produce high-amplitude vibrations.
- Engines from 1 to 3 cylinders, Motor Pumps, Gen Sets, Compressors, Ventilators.
- It is a very suitable mount for engines where it is not physically possible to install the antivibration mounts at the same height as the crankshaft.



Type	Load (kg)	Weight (gr.)	Code
A	130	238	135210
B	105	238	135212
C	70	238	135213
D	50	238	135219





Load Deflection Graph MD Type Mount

