

OFF HIGHWAY

SCH MOUNTS



SCH Mounts

DESCRIPTION

The SCH type mounts are made of two parts of rubber, one of which bears an inside metal bushing which acts as a guide through the machine anchoring screw.

It is installed pre-compressed on the actual machine frame, whose thickness "T" determines the degree of precompression.

Technical Characteristics

This antivibration mount is ideal for applications of major dynamic loads where movement control is necessary, such as in the cabins of all types of mobile vehicles. It also offers optimal stability, as well as good attenuation of impacts and vibrations.

Applications

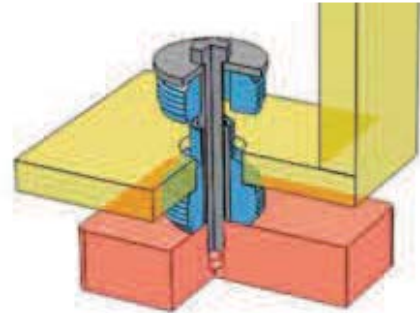
- Vehicle cabins.
- Public works and agricultural vehicles, etc.

Assembly instructions

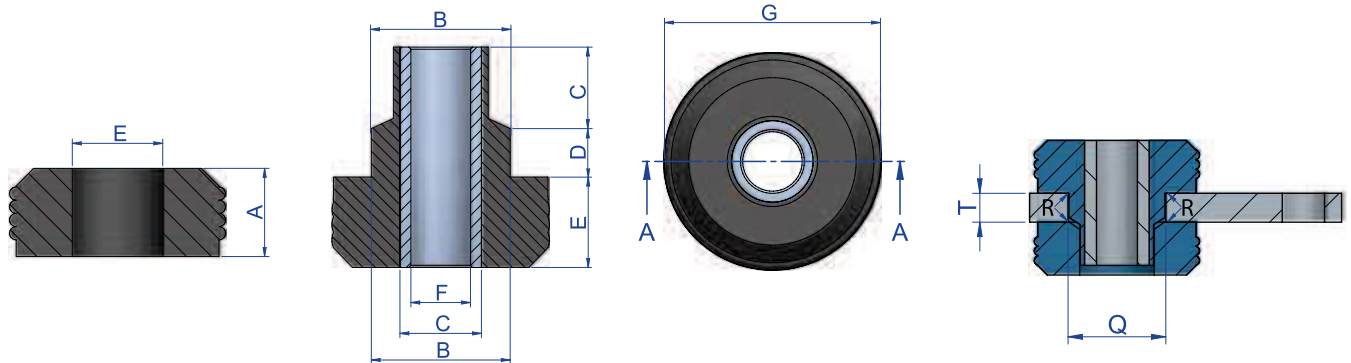
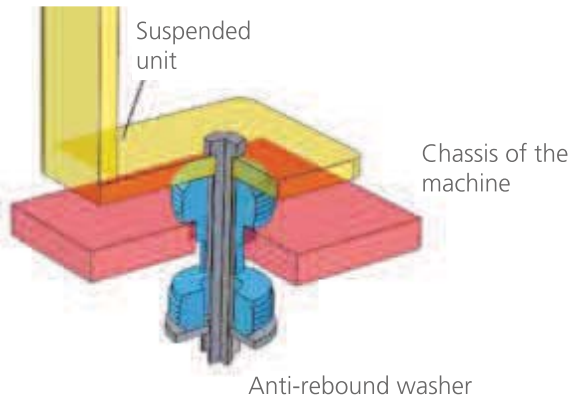
The SCH mounts should be assembled according to the following installation instructions. There are two possible configurations, see assembly 1 and assembly 2, for which the recommendations given in the following chart must be observed. They can be installed in plates of different thicknesses according to the T_{max} and T_{min} values given in the table at the bottom. The Load vs. Deformation curves will vary according to the thickness of the plate on which the mount is to be installed.



- Assembly 1



- Assembly 2



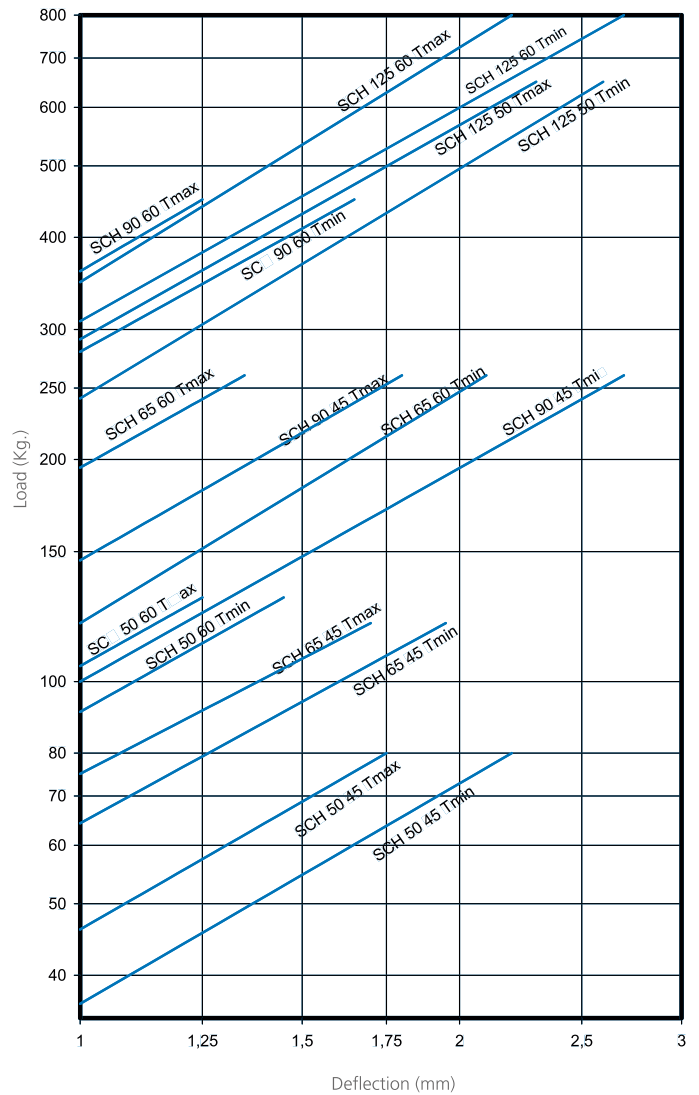
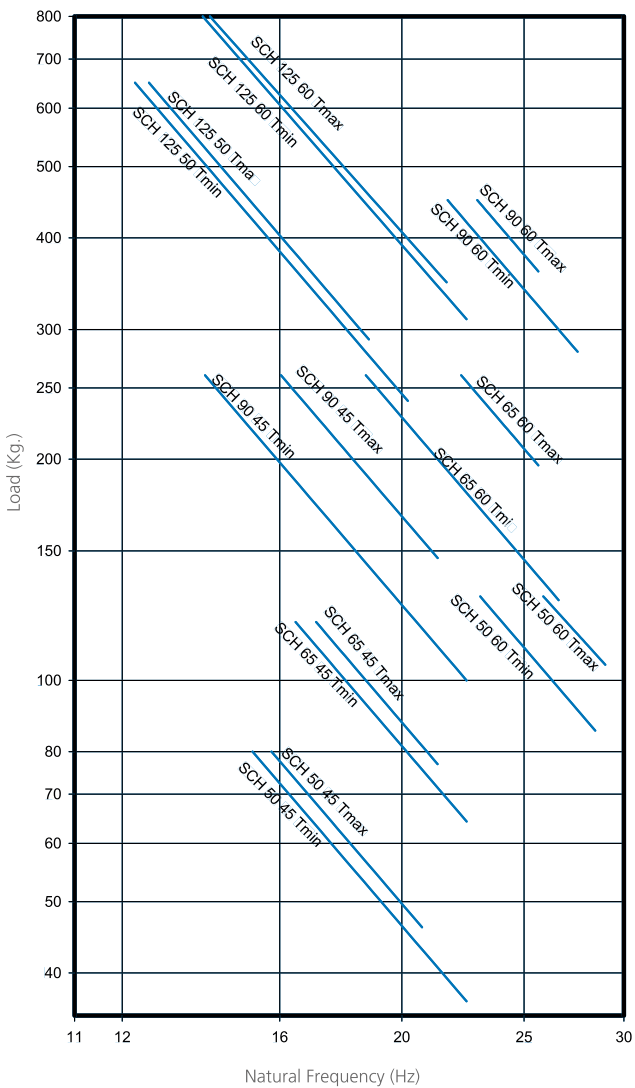
Type	A (mm)	B (mm)	C (mm)	D (mm)	E (mm)	F (mm)	G (mm)	Q (mm)	T (Max.)	T (Min.)	Weight (gr.)	R (mm)	Code	Shore	Max. Load (kg)
CB 50	20	31	19,5	10,5	20	13,5	49	30,5	14	12,5	153	1,5	138501 138504 138522	45 Sh 60 Sh 75 Sh	70 120 170
CB 65	23	39,5	24	15	23	17	63,5	38,5	22	19	350	2,5	138502 138505	45 Sh 60 Sh	70 120
CB 90	25	58	31	17	25	23	88	57	29	25	675	3	138503 138506	45 Sh 60 Sh	90 140
CB 125	32	64,5	32,5	22	32	27	125,5	64	32	25	1440	3	138514 138515	50 Sh 60 Sh	235 375

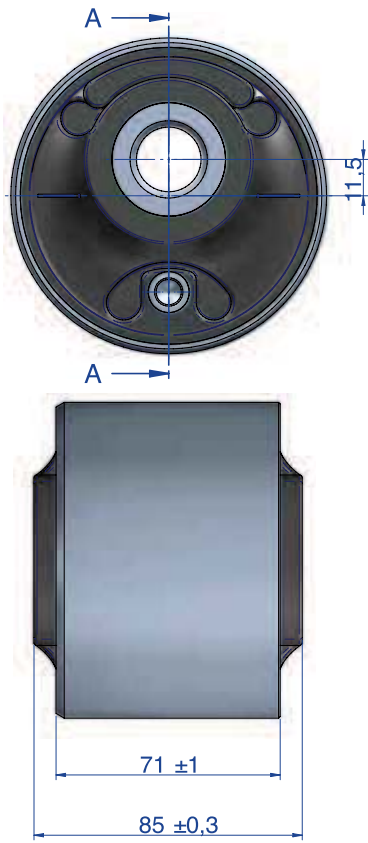
Type	Code	Weight (kg.)	Øext (mm)	Øint (mm)	THICKNESS (mm)
SCH 50 WASHER	611080	0,051	54	12,5	3
SCH 65 WASHER	606130	0,125	67	16,5	5
SCH 90 WASHER	608101	0,31	96	22	6
SCH 125 WASHER	610123	0,58	125	25	8



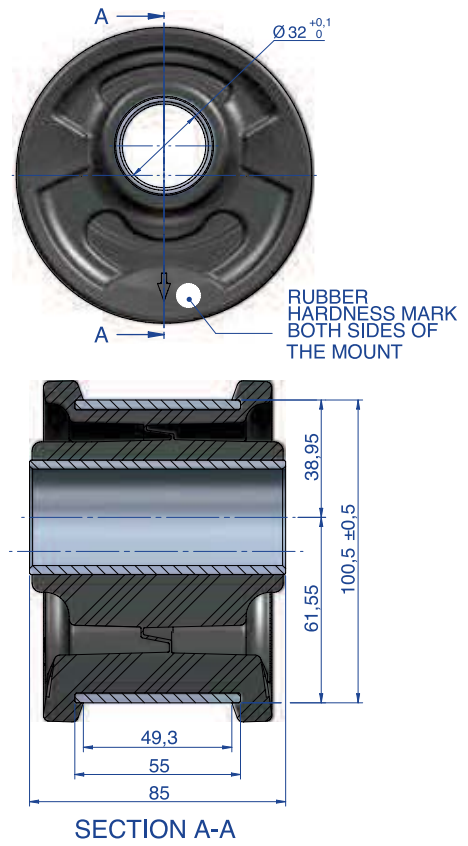
Natural Frequency Cabine Mount

Load Deflection Graph Type Cabine Mount





100 RD



100 HD

